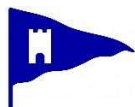


**NARROW SERIES**  
**STRANGFORD SAILING CLUB**  
**REGATTA 2018**



Sponsored by



**Friday 13<sup>th</sup> July 2018**

<b>RACE PROGRAMME AND CLASS CODE FLAGS</b>				
<b>Race</b>	<b>Start</b>	<b>Class</b>	<b>Code Flags</b>	<b>Course</b>
1	1200	Cruiser IRC0.950 & over	Numeral 1	A
2	1205	Cruiser IRC0.949 & under	Numeral 2	B
3	1210	Cruiser NHC1	Numeral 4	B
4	1215	Flying Fifteen	A	C
5	1220	Cruiser NHC2	Numeral 5	C
6	1225	Sonata	Numeral 6	C
7	1230	Cruiser Restricted Sail NHC1	Numeral 7	C
8	1235	River	R	C
9	1240	Glen	G	C
10	1245	Cruiser Restricted Sail NHC2	Numeral 3	D
11	1250	Squib	E	D
12	1230	Large Dinghy H/cap1134 & under	J	See Rule 9
13	1235	Dinghy H/capPYS 1135 & over	V	See Rule 9
14	1240	Laser 4.7, Optimist, Toppers & Mirrors	T	See Rule 9

**High Water Strangford 1350 hours**

**This Regatta will be the first in the Narrows Regatta Series**

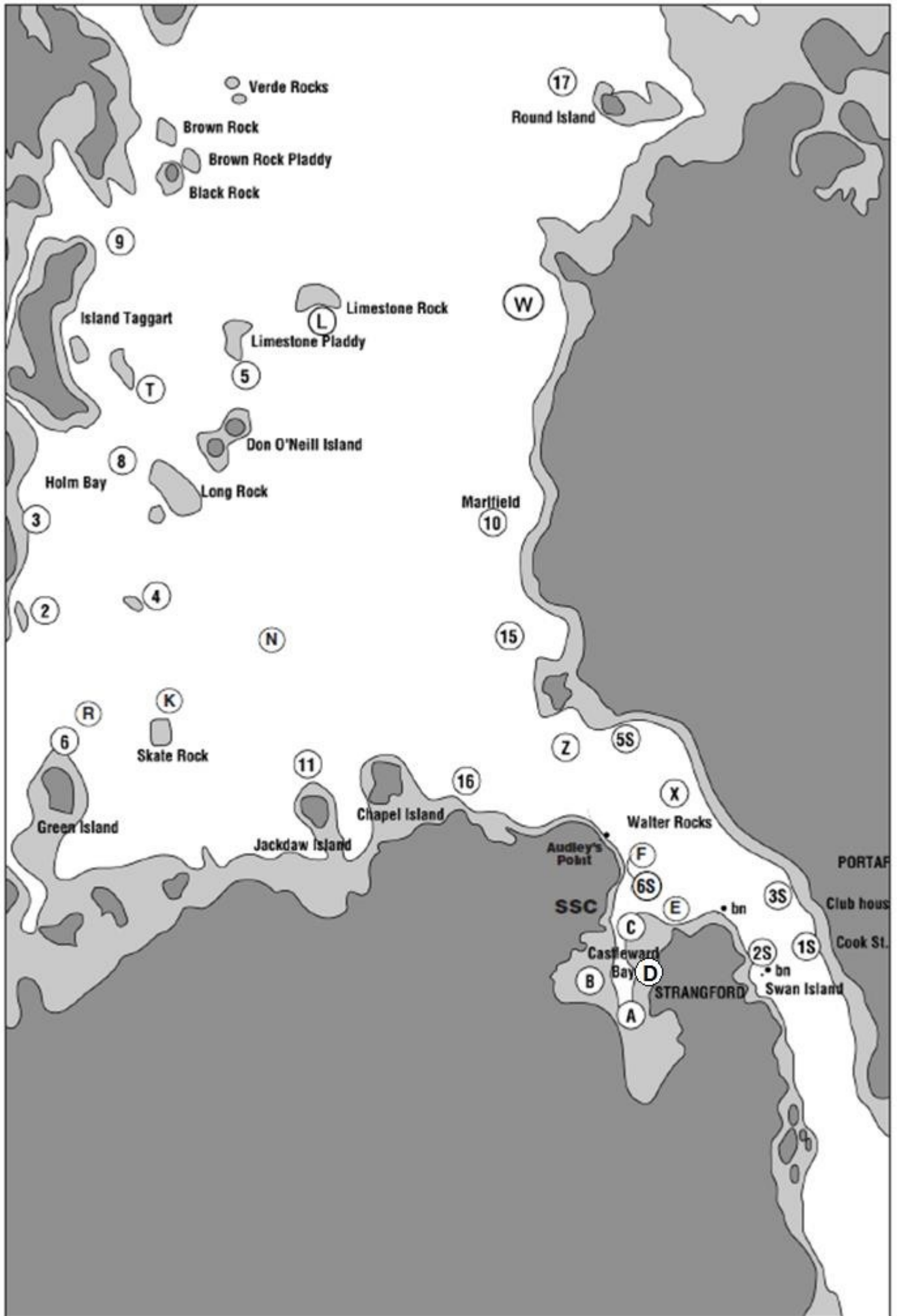
**Commodore: Philip Sandford**

**Sailing Secretary: Gerry Reilly**

**Mobile no: 07912502669**

**For further information go to:**

**<http://www.strangfordloughregattas.co.uk> or [www.strangfordsailingclub.com](http://www.strangfordsailingclub.com)**



## RULES

### 1. SHORTENING COURSE

Sound signal and display of Code flag S on Safety Boat. Yachts should return to the finish from this mark. If Code flag F is displayed following sound signal Yachts will finish between this mark and a finishing boat flying Blue flag.

### 2. PROTESTS

In writing to the Race Officer within one hour of the race finish, accompanied by a £25 deposit, forfeited if protest is deemed frivolous.

### 3. SAFETY

It shall be the responsibility of each skipper to decide whether or not to start or continue racing. All crews must comply with their Class Rules regarding craft and personal buoyancy (wet suits alone are not accepted as personal buoyancy). All dinghies must have a means of adequate bailing. Safety boats may be present, but competitors are encouraged to achieve self-rescue. However, they must accept help if so directed by the rescue crew. Non-acceptance will result in disqualification. Any yacht retiring must notify the Race Officer as soon as possible. Safety boats are requested to liaise with the Committee Boat prior to the commencement of racing to co-ordinate duties. Safety crews are reminded of the necessity to ferry both before and after racing.

### 4. THE COMMITTEE

The committee reserve the right to alter the programme, postpone or abandon the Regatta. Competitors are accepted on condition that the Club Committee is not held responsible for injury, loss or damage to people or property, however caused.

### 5. COMPETITORS

All competitors are requested to sail past Committee Boat to enable the Race Officer to record sail no, class and handicap.

### 6. PRIZES

A prize will be awarded to the first boat in each class. Prizes will be presented after Racing at the Clubhouse, Castleward. Overall prizes will be awarded in P.S.C. on Sunday, 15th July, after racing.

### 7. HANDICAP CLASS

If four or more boats in any class notify the Race Officer a race will be provided for them. They should start in the appropriate Handicap Class.

### 8. REFRESHMENTS

Crews are invited to tea in the Clubhouse at Castleward after racing.

### 9. RACES 12, 13 & 14

Will start and finish in Castleward Bay, at Mark C where their course will be displayed. All dinghy sailors must register their entry with the Race Officer before the start of the race and also report their safe return not later than 30 minutes after finishing or retiring.

## RACING INSTRUCTIONS

### COMPETITORS

Yachts not registered with Strangford Lough Regatta Conference 2018, competing in Races 1, 2, 3, 5, 6, 10, 12, 13 and 14 must confirm their IRC/NHC/PY rating with the Race Officer prior to the start of their race. Failure to comply with this rule may lead to disqualification. (Competitors should also refer to the SSC Risk Assessment at [www.strangfordsailingclub.com](http://www.strangfordsailingclub.com))

### START ALL RACES (except Races 12, 13 & 14 – see Rule 9)

Blackboat Bay between main mast of Committee Boat and Outer Limit Mark.

### FINISH ALL RACES (except Races 12, 13 & 14 – see Rule 9)

Between the main mast of Committee Boat and Mark 6S

### COURSES

All Yachts racing must keep west of Walter Rock and wreck at Ballyhenry

Course A - Race 1

Course B - Races 2-3 Course

C - Races 4-9 Course D -

Races 10-11

### DISPLAY AT START OF ALL RACES

Red Numbers: Mark to Port / Green Numbers: Mark to Starboard

Black Numbers: Rounds to be sailed.

### TIME LIMIT

Any yacht failing to finish by 1600 hours will be deemed to have retired.